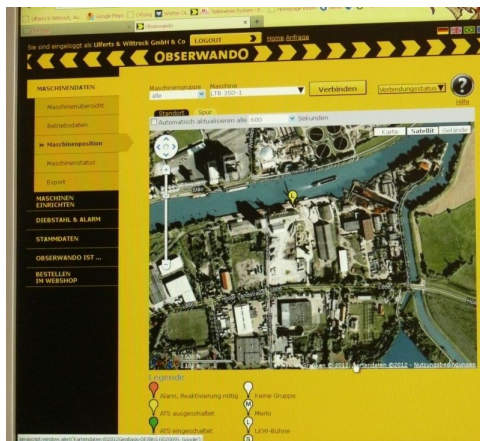


## A fascinating aid

**Rösler Systeme increase the efficiency of machine application – clear data situation for hirer and rental company.**



It is fascinating. One click and all working platforms and lift trucks appear with their operating data on the screen. Ulferts & Wittrock, a rental company for mobile cranes and work platforms in Oldenburg, uses for some of its 100 machines the Rösler systems miniDaT and Obserwando. Using these aids they know who is working. For example you can detect immediately if the motor of the platform is running, a power take-off is working (interesting for lifting platforms), if the tower is put down (important for mobile cranes) and if there was an overload, for example for lift trucks. "The Rösler

systems permit us a good overview of everthing our rented out machines are doing at the moment. Like this we can always keep an eye on the machines", says Ingo Horstmann, authorised representative of Ulferts & Wittrock.

### Five different operating data can be collected

The Rösler miniDaT systems used here continuously collect, as required, the data from up to five machine functions. These data can be stored in the miniDaT for up to 365 working days. For example when carrying out a service they can be read with a handy data collector and evaluated with the WinDaT-Pro Software at the PC. At Ulferts & Wittrock Rösler Obserwando is also used. This means that the requested data can be accessed over the Internet with the yellow Obserwando mask in a clear and structured manner on



the office screen. In real time you can see if and for how long the motor is running, if the ignition is on, if there was an overload and to what extent. Furthermore GPS tracking is applied. In practice this offers concrete benefits: for example, if a machine was inactive on site for one week and a new work crew wants to start with the work, however they cannot find the machine. One call to the office and precise directions can be given.



## Benefits to hirers and rental company

In the meantime Rösler systems have successfully proven themselves. On the one hand as updated machine data is available and accessible online. On the other hand however also as this significantly facilitates the planning of servicing or accident prevention inspections. The operational data of the miniDaTs that are not connected to Obserwando is read during the service. For this purpose two workshop trucks are used at Ulferts & Wittrock. They combine

one thing with the other which results in a detailed documentation of what the machine did. This is a real benefit to the hirer and the rental company, as you do not have to rely on assumptions, but you can work with actual data. Obserwando and Rösler minDaT are for example used on the Airo X8EN platforms, at Haulotte Star 10 and also on the lift trucks of Merlo P 38.13. Ulferts & Wittrock with its locations in Oldenburg, Brake und Wilhelmshaven forms part of the Wittrock Group of Companies. It is one of the big companies in this sector with 100 mobile and and caterpillar cranes, 60 very modern heavy-haulage tractors and over 500 work platforms and telescopic forklifts. 240 Mitarbeiter are at the customer's service every day. Here in the North-West of the Republic it is shown repeatedly that Rösler systems achieve above all in efficiency. As described, this is not only about always knowing where the machine is, but also that current operating are permanently available. A benefit to everybody using platforms, lift trucks and cranes.

## The company

The Rösler Software-Technik GmbH is since 1985 active on the German and European market. With the miniDat-hardware, the WinDaT-software and the Obserwando-system the company offers a complete package of stationary or internet-based monitoring equipment for mobile machines and devices. Theft protection, machine positioning, machine data collection and order processing are the main areas of the Rösler-systems. The Rösler-systems are distributed directly or via retailer. By now more than 50,000 systems are used in forklifts, platforms, construction machines and vehicles.

With the new Rösler-App daTime a further step was made towards a mobile and paperless order processing via smartphone and tablet. More information at [www.daTime.de](http://www.daTime.de), [www.minidat.de](http://www.minidat.de).

Information:  
Rösler Software-Technik GmbH  
Betsbruchdamm 29  
28816 Stuhr  
Tel: +49 (0) 421 – 80 22 70-0  
Fax: +49 (0) 421 – 80 99 397  
E-Mail: [info@minidat.de](mailto:info@minidat.de)  
[www.minidat.de](http://www.minidat.de)

Press contact:  
Teubert Kommunikation  
Im Krummen Ort 6  
28870 Fischerhude  
Tel: +49 (0) 4293 – 78 94 890  
Fax: +49 (0) 4293 – 78 94 891  
E-Mail: [info@teubert-kommunikation.de](mailto:info@teubert-kommunikation.de)  
[www.teubert-kommunikation.de](http://www.teubert-kommunikation.de)